

2-Port Isolator, WR340

GERLING

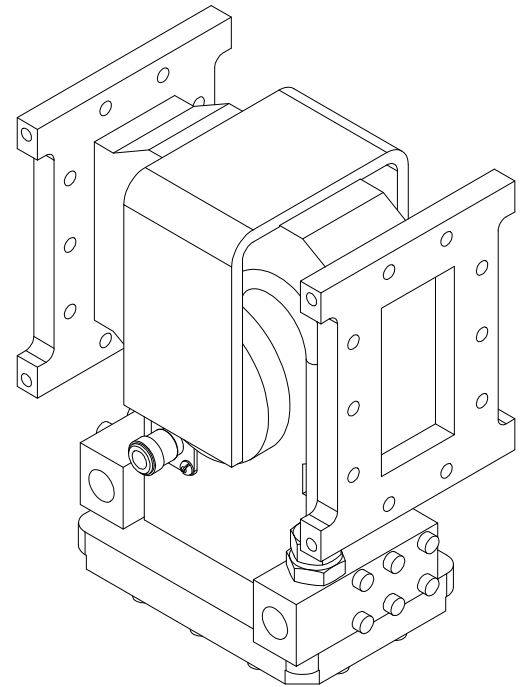
Model GA1107

The model GA1107 2-port isolator is designed for high power industrial heating applications requiring high reliability and rugged construction. This isolator is most often used for protecting magnetrons from the damaging effects of reverse microwave power. It is designed for 6kW continuous forward microwave power and will withstand a full reflection indefinitely. A calibrated coupler port is provided for monitoring reverse power entering port 2.

Construction of the GA1107 is all brazed aluminum waveguide. Reverse power is absorbed directly into water through internal quartz tubes. All other water lines and fittings are copper or brass to minimize corrosion due to harsh cooling water supplies. A Type N female coaxial port is provided at the load section to facilitate the measurement of reverse power.

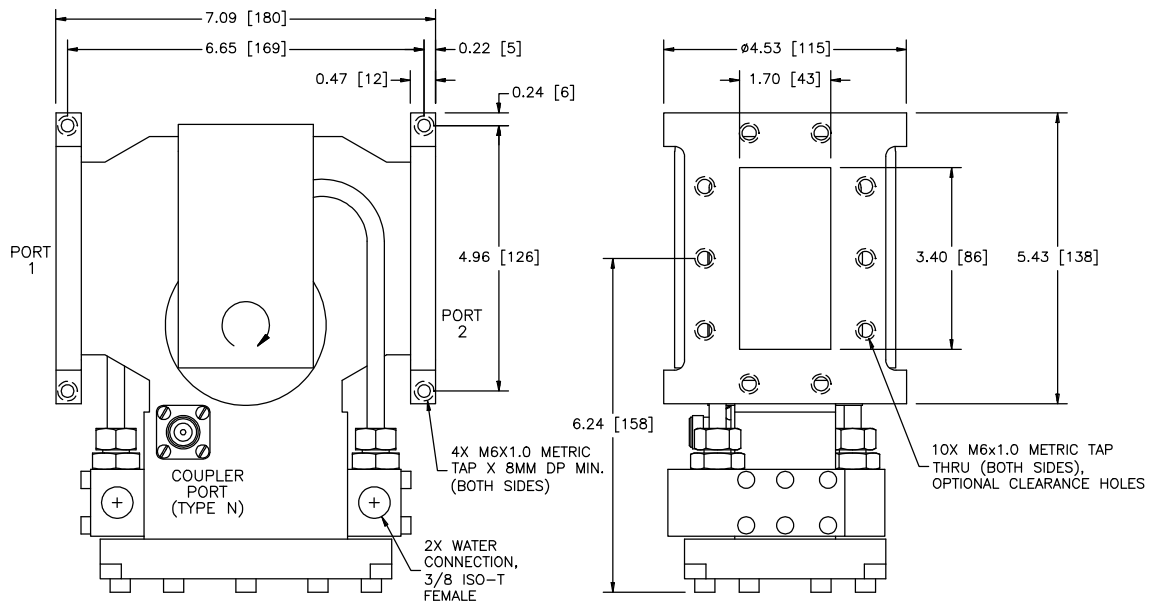
General Specifications:

Frequency	2450 MHz nominal
Input Power	6 kW continuous max. (fwd and rev)
Waveguide	WR340 (RG113/U)
Flanges	WR340 (UG554/U) with M6 tapped holes
Input VSWR	1.2 max. (Port 1)
Insertion Loss	0.15 dB max. (Port 1 to Port 2)
Isolation	20 dB min. (Port 2 to Port 1)
Coupler Port	Type N female
Coupler Calibration	50 +/- 1.5 dB (measured within +/- 0.2 dB)
Water Connections	3/8 ISO Tapered female threads
Water Flow	0.5 gpm (1.9 lpm) min., 60 psig (414 kPa) max. inlet pressure, 10-40°C inlet temp (must be above dew point), 50°C max. outlet temp
Construction	Dip brazed aluminum, brass water connections



Options:

- ◆ Flange interlock switch (either flange)
- ◆ Water connection fittings (various types available)
- ◆ Analog meter set or signal interface for reflected power coupler port



GERLING APPLIED
ENGINEERING, INC.

© 2004 Gerling Applied Engineering, Inc.
PO Box 580816 • Modesto, CA 95358 • USA
Phone: +1-209-527-8960 • Fax: +1-209-527-5385
E-mail: sales@2450MHz.com • Web: www.2450MHz.com